



ABC Impacts

Aviation and the Belgian Climate Policy:
Integration Options and Impacts
Belspo contract SD/CP/01B



Workshop on aviation scenarios and climate impacts, 26 March 2010

Meeting room: M420

Pleinlaan 2, 1050 Brussels – 4th floor

Vrije Universiteit Brussel, Campus Etterbeek, building M

(<http://www.vub.ac.be/infoover/campussen/etterbeek.html>)

Tea, coffee, etc.	9.15
1. Welcome	9.30
2. Synthesis ABC Impacts project results and forthcoming work	9.40
(Sandrine Meyer ; CEESE-ULB)	
3. Technology developments and aviation growth up to 2050	10.00
(Chris Eyers ; QINETIQ)	
4. Impacts of flight altitude changes on aviation climate forcing	10.30
(Christine Frömming ; Deutsches Zentrum für Luft- und Raumfahrt, DLR)	
Coffee break	11.00
5. Prediction of supersaturated areas in the DWD weather models	11.15
(Carmen Koehler ; Deutscher Wetterdienst, DWD)	
6. Multi Criteria Analysis in the ABC Impacts project	11.45
(Annalia Bernardini ; MOSI-T-VUB)	
7. Exercise MCA / Discussion / Questions	12.05
8. Conclusions and closure	13.00

Lunch time: sandwiches

ABC Impacts website:

<http://www.climate.be/abci>



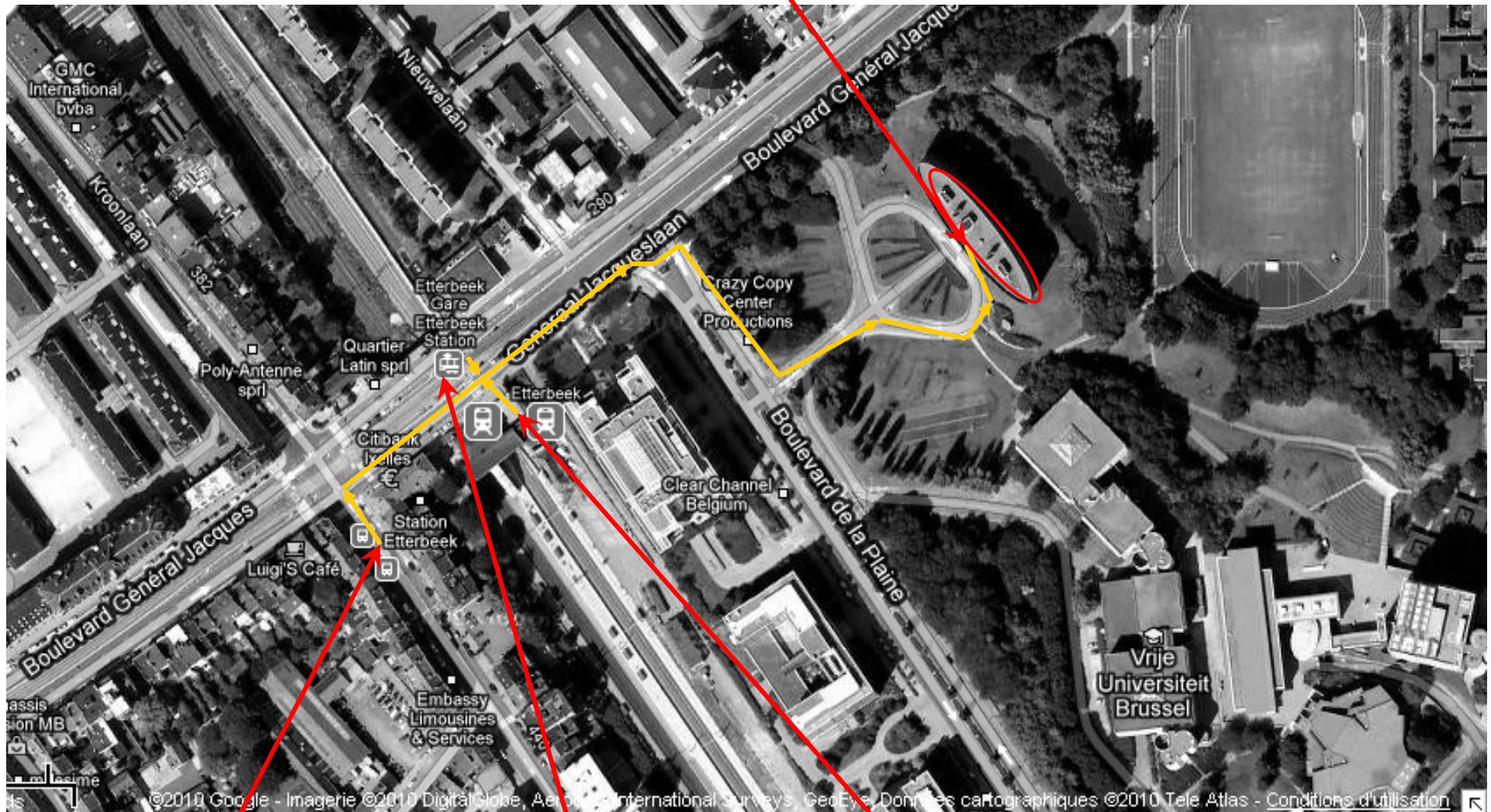
Vrije Universiteit Brussel
Electrical Engineering and Energy Technology



Vrije Universiteit Brussel
Department of MOSI – Transport and Logistics



Université
catholique
de Louvain
ASTR



Bus 95:

« Gare d'Etterbeek – Etterbeek station »

Tram 23 - 24 - 25:

« Gare d'Etterbeek – Etterbeek station »

Train:

Etterbeek train station